

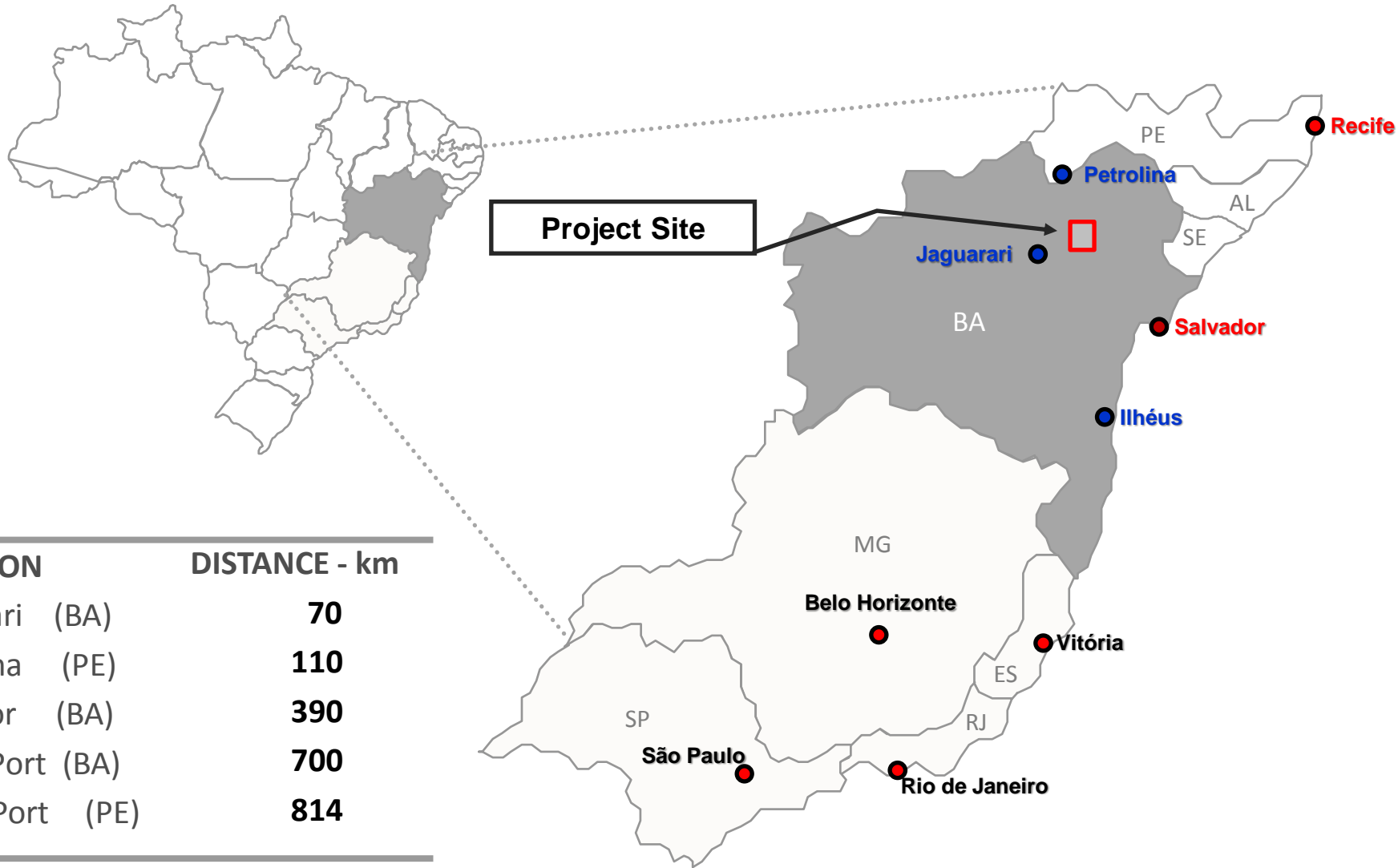
# BAHIA COPPER PROJECT



## Preliminary Evaluation of Copper Occurrence

Pilar District, Municipality of Jaguarari  
(Bahia State, Brazil)

# Bahia Copper Project – Location and Logistics





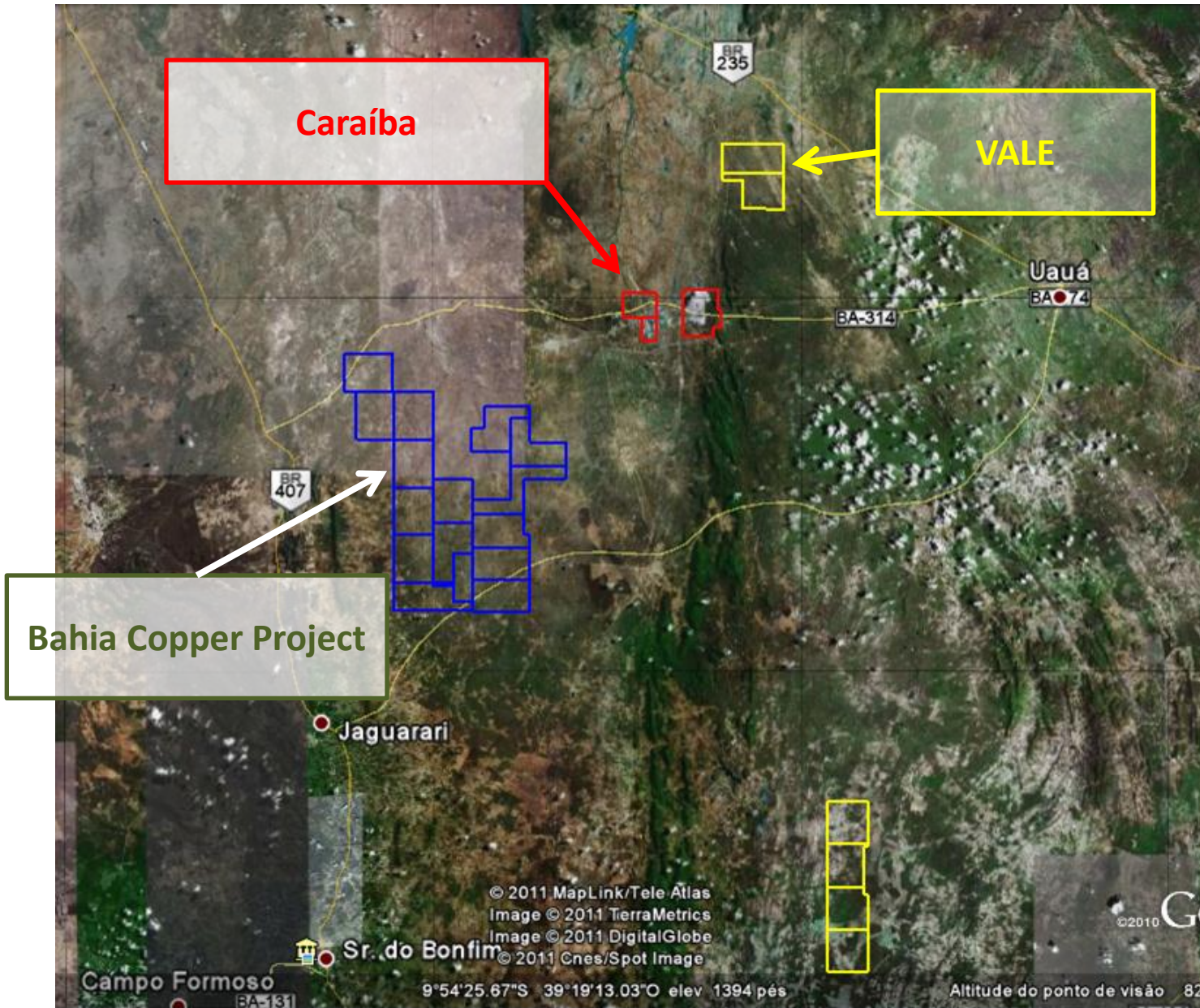
## Geographic Location of Bahia Copper Project



The distance between the Pilar District , Municipality of Jaguarari to Salvador is 360 km by paved highway

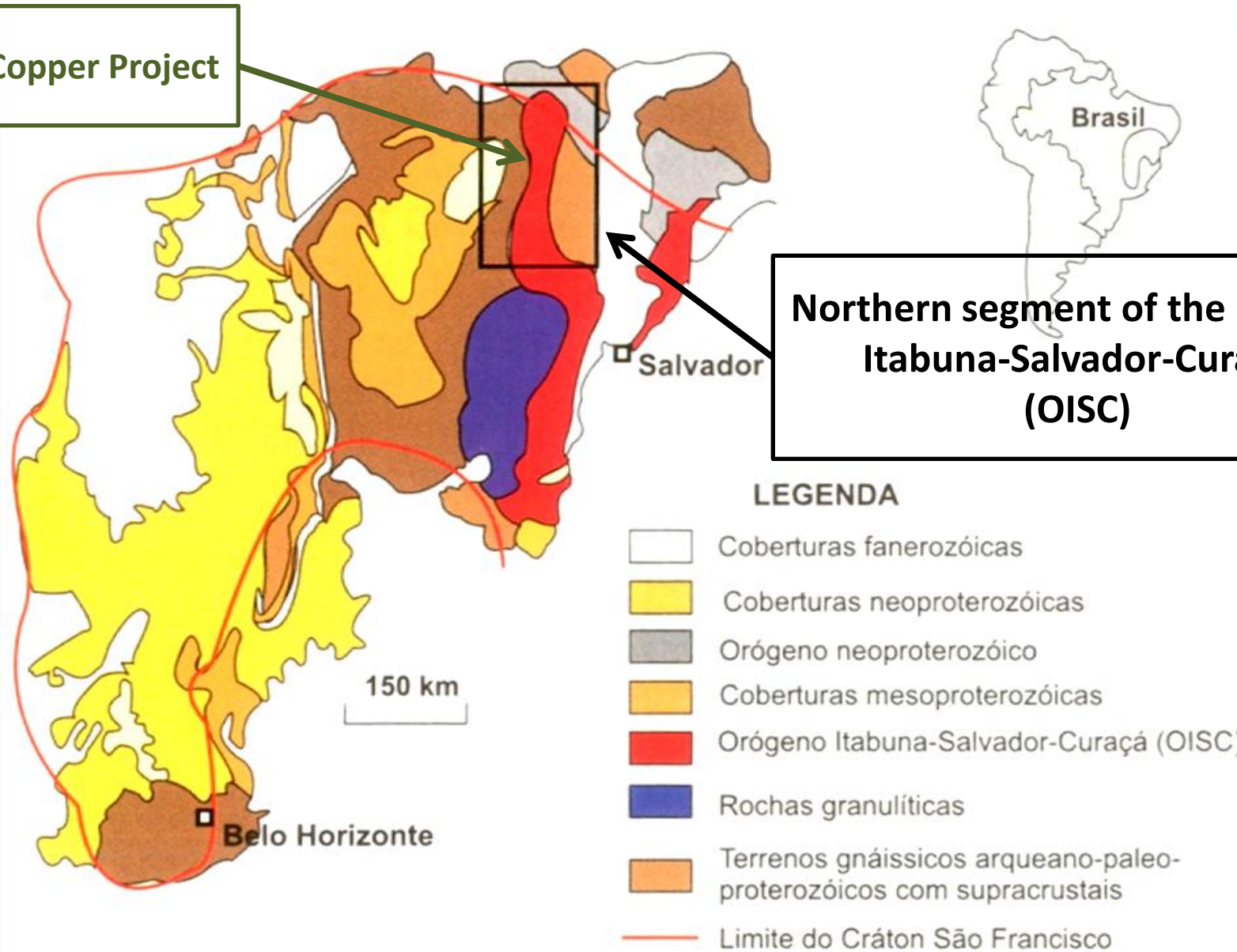


# Mineral Rights - Overview



# Schematic Geological Map of the São Francisco Craton

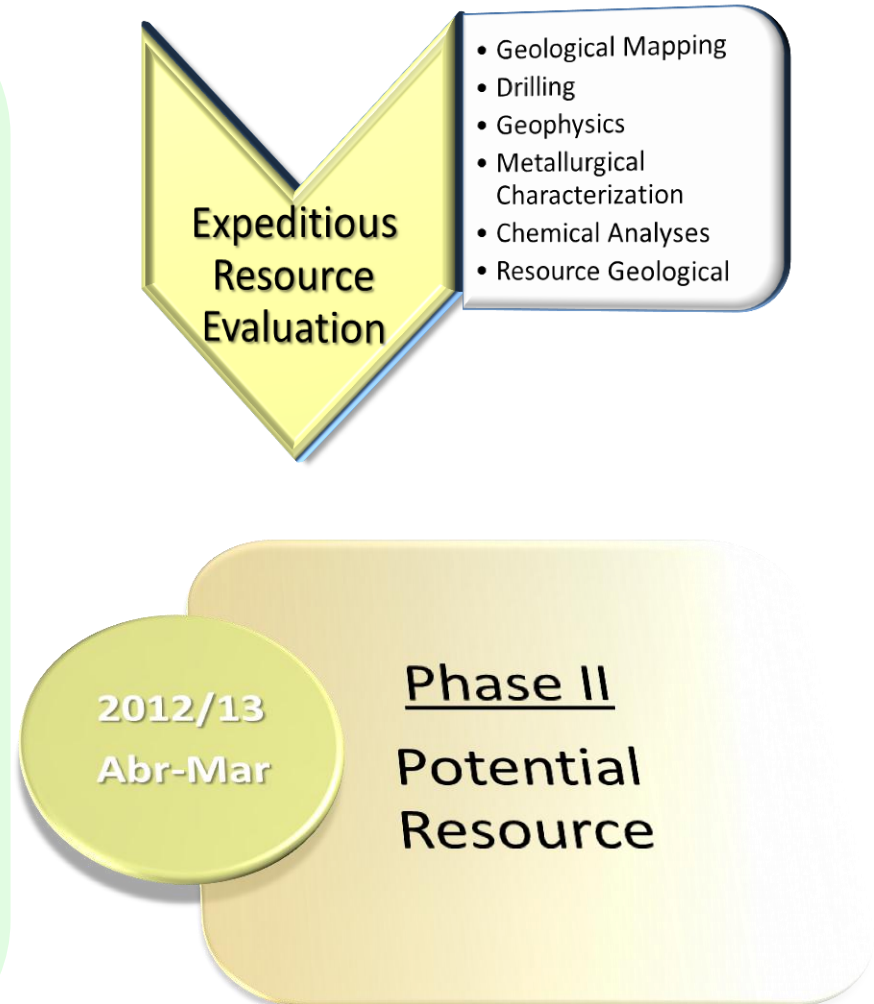
Bahia Copper Project



Northern segment of the Orogen Itabuna-Salvador-Curaçá (OISC)



# Project Development



## Concluding Remarks

The potential occurrence of copper in the Bahia Copper Project has the following geological evidences :

- ✓ Presence of basic and ultrabasic rocks;
- ✓ Outcrops of sulphide mineralization and copper oxide (malachite and azurite);
- ✓ Shear zones associated with basic-ultrabasic rocks, and
- ✓ Rocks with low potassium concentration indicating the presence of ocean basins (OISC);
- ✓ Evidences of other metals such as chromium, gold, nickel and tungsten have not been verified in the field.